

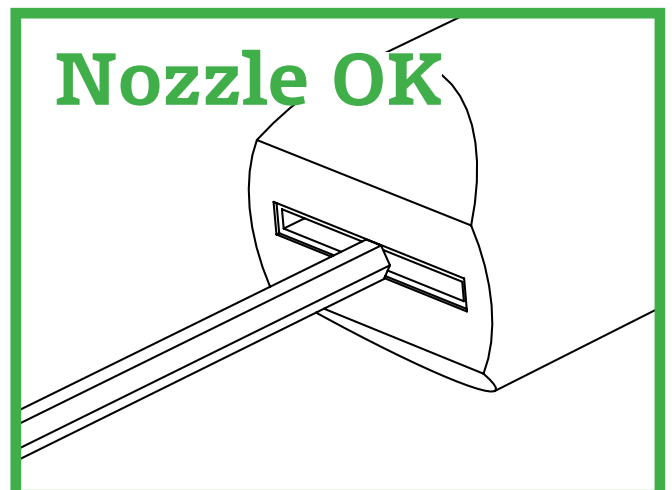
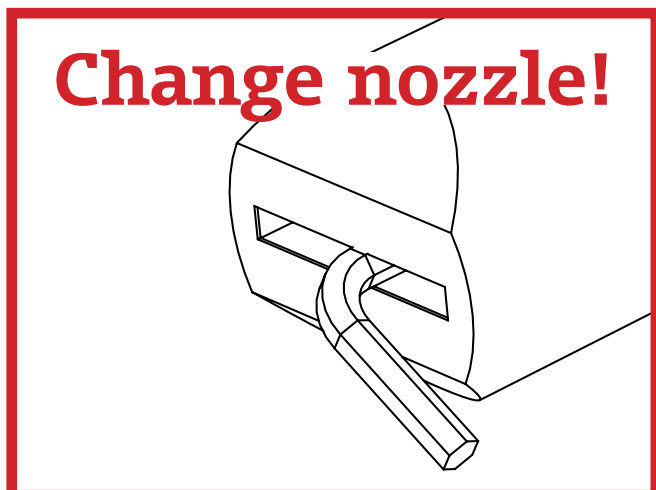
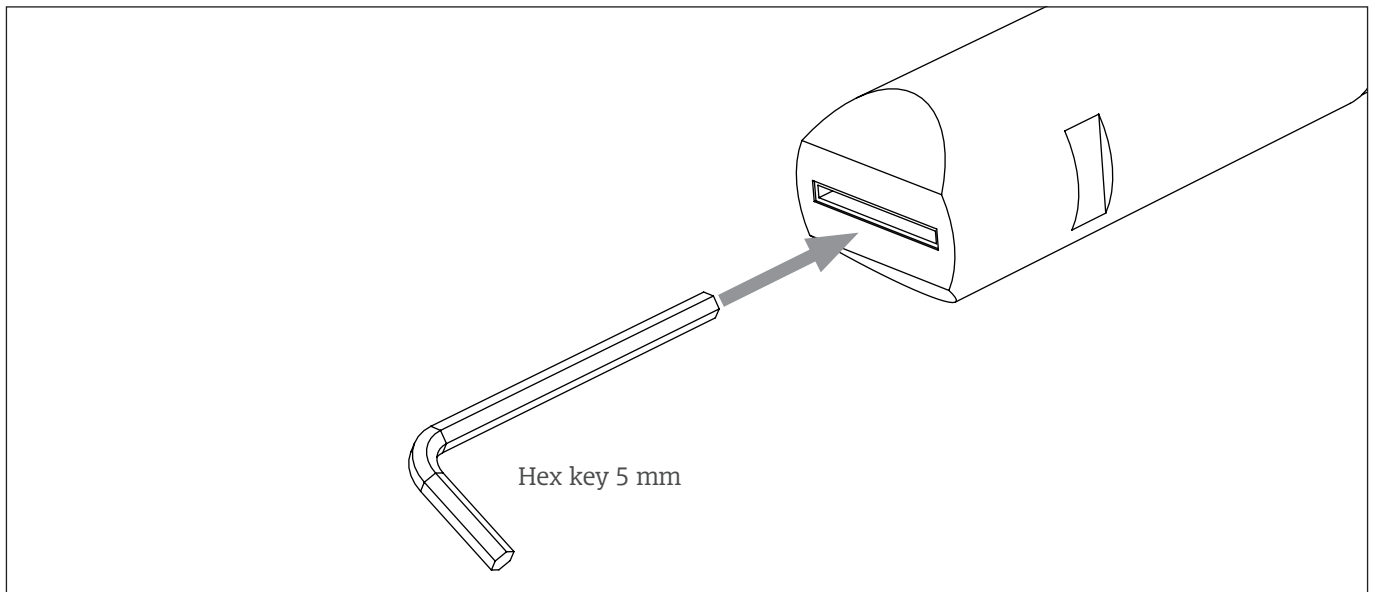
NOZZLE INSPECTION ROUTINES

PIWALK / PIBOX NOZZLE

Inspection routines for PiWalk 9,5 mm fan nozzle:

INSPECTION ON SITE:

- Change nozzle if opening is 5 mm or bigger.
- **Tip:** use a hex key size 5 mm to check nozzle opening.
The nozzle should be changed if it is possible to enter it all the way through the narrowest part of the nozzle.

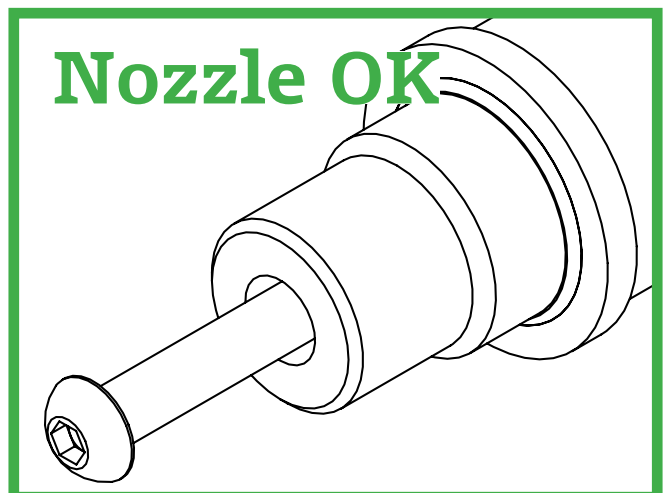
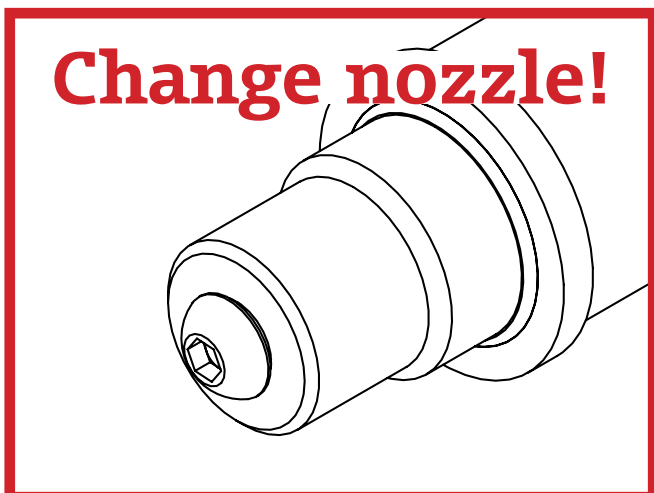
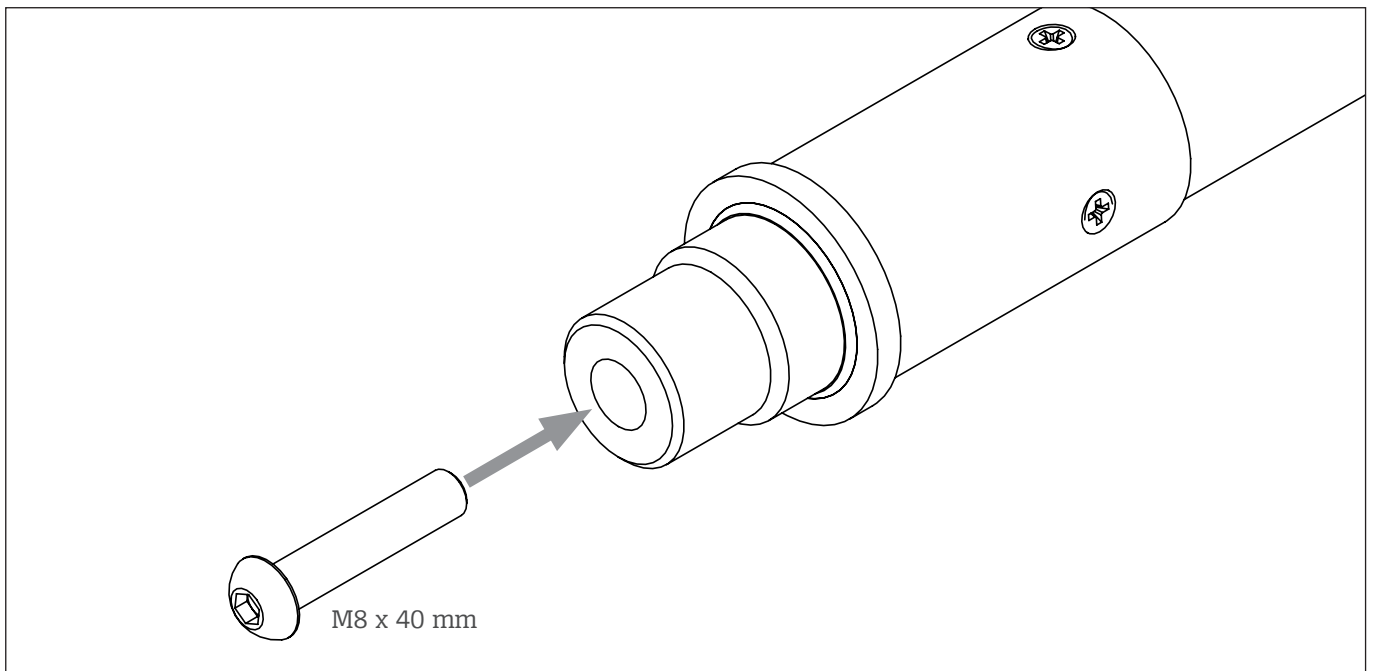
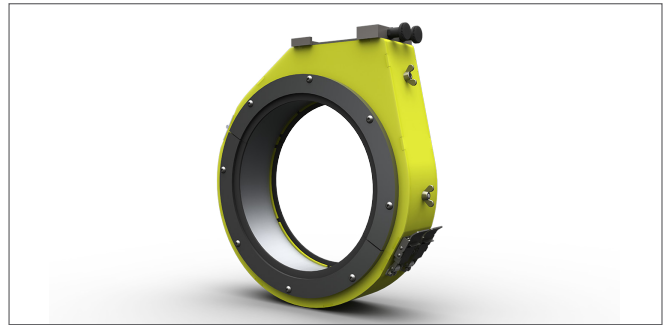


PICO PIPE / PICONNECT NOZZLE

Inspection routines for PiConnect 6,4 mm venturi nozzle:

INSPECTION ON SITE:

- Change nozzle if opening is 8 mm or bigger.
- **Tip:** use a M8 screw (40 mm length or longer), or 8 mm drill bit, to check nozzle opening. The nozzle should be changed if it is possible to enter it all the way through the narrowest part of the nozzle.



PIPOINT NOZZLE

Inspection routines for PiPoint 6,4 mm straight bore nozzle:

INSPECTION ON SITE:

- Change nozzle if opening is 8 mm or bigger.
- **Tip:** use a M8 screw (30 mm length or longer), or 8 mm drill bit, to check nozzle opening. The nozzle should be changed if it is possible to enter it into the nozzle.

