

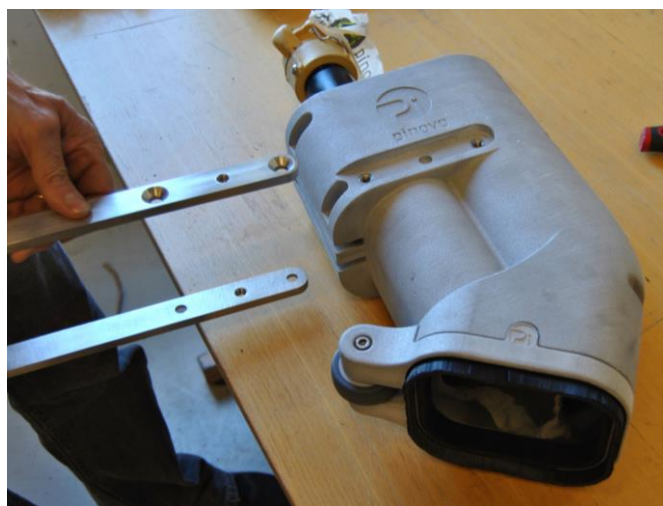
EXCHANGE OF PIWALK WEAR RUBBER

WARNING

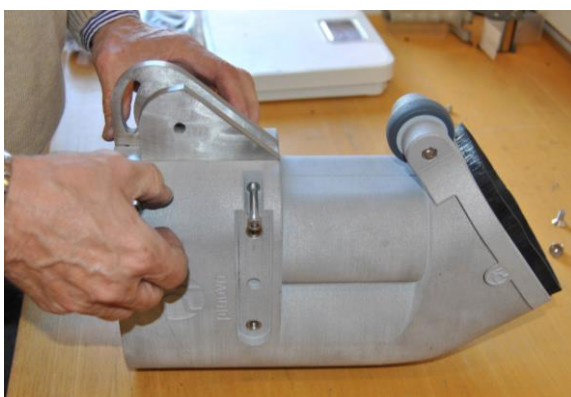
Before exchanging wear parts make sure that:

- The system (PiSys) is depressurized
- The control hose is removed from the system

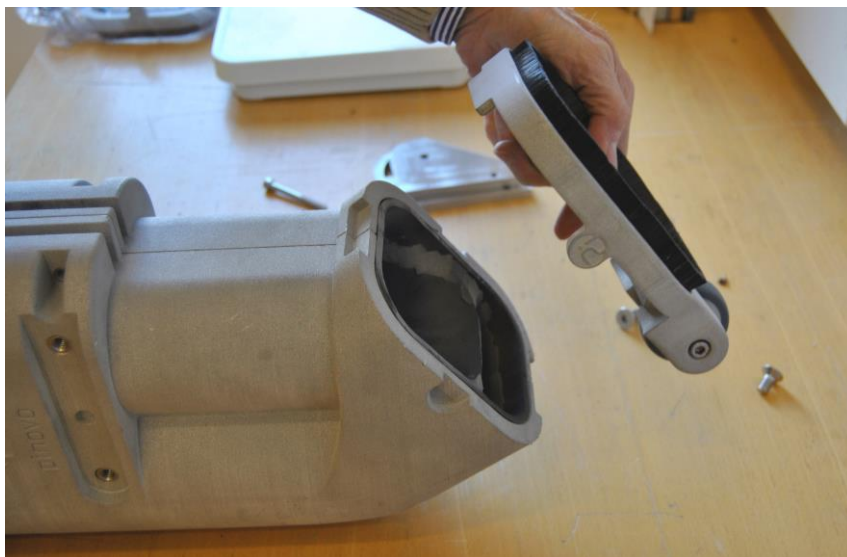
1. Remove blast- and suction hoses from the tool. This is done by following the steps described below in order to open the housing.
2. Remove the wheel fixture by removing the four screws, as shown below.



3. Remove the steel parts of the handle fixture by opening the two screws, as shown below.



4. Remove the adapter.



5. Open the three screws in the front of the housing.



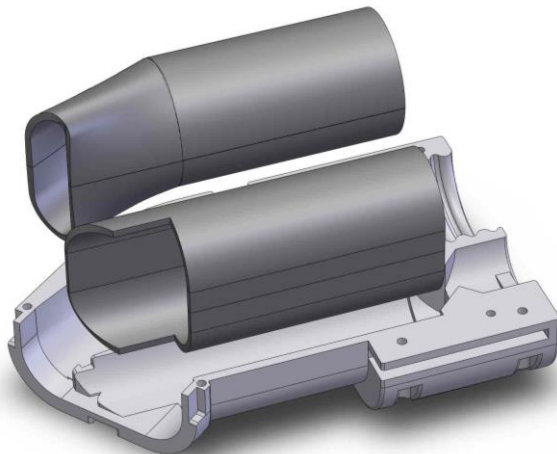
6. Use a sharp knife to cut loose the rubber from the housing. Open the housing.



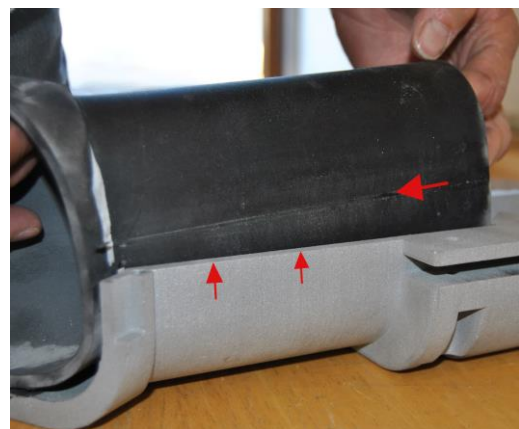
7. Remove the worn rubber parts.



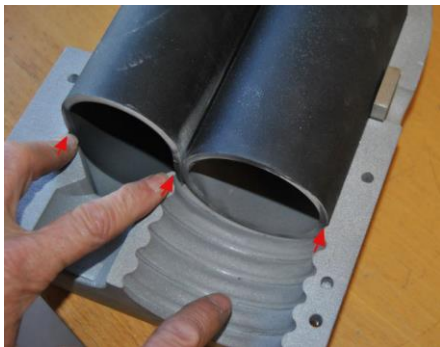
8. The wear rubber parts of the PiWalk housing consist of three parts. The two parts shown below should be inserted first.



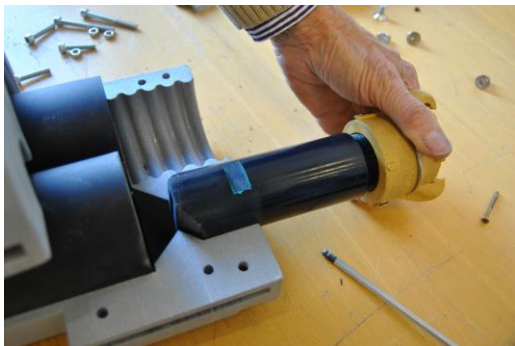
It is important that the glued connection of the wear parts is aligned with the edge of the PiWalk housing.



Ensure that the rubber parts are placed as shown below.

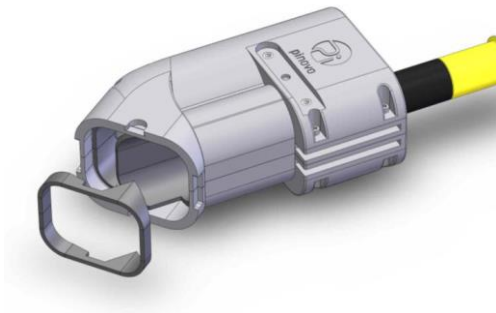


9. Insert the nozzle into the housing. Press the housing parts together.



10. Insert the steel parts for the handle fixture and fasten all screws.

11. Insert the remaining rubber wear part as shown below.



Main Office

Visit: Sanddalsringen 3, NO-5225 Nesttun

Postal: PO Box 154, NO-5828 Bergen

Country: Norway

Phone: +47 907 55 500

www.pinovo.com

Pinovo UK

Visit/Postal: C/O AquaTerra Group,
AquaTerra House, Tofthills Ave., Midmill
Business Park, Kintore, Aberdeen, AB51 0QP

Country: Scotland

Phone: +44 7551 891 818